



# 205' PSV SEABULK KANSAS

205' PSV SEABULK KANSAS

## MAIN PARTICULARS

LENGTH OVERALL	205 Ft.	62.49 M
LENGTH BP	191.2 Ft.	58.28 M
BEAM	46 Ft.	14.02 M
DEPTH	17 Ft.	5.18 M
LIGHT DRAFT	9 Ft.	2.74 M
LOADED DRAFT	14 Ft 2 in	4.32 M
SUMMER FREEBOARD	2 Ft 10 in	0.88 M
LIGHT SHIP	936.62 Lt.	951.65 Mt.

## CAPACITIES (100%) U.S. METRIC

FUEL	124,971 Usg	473.07 M <sup>3</sup>
DRILL WATER	162,758 Usg	616.11 M <sup>3</sup>
POTABLE WATER	30,142 Usg	114.10 M <sup>3</sup>
METHANOL	N/A	N/A
LIQUID MUD	3,244 bbls	515.72 M <sup>3</sup>
DRY BULK	8,425 Ft. <sup>3</sup>	238.57 M <sup>3</sup>
BRINE	136,239 usg	515.72 M <sup>3</sup>
BASE OIL	136,239 usg	515.72 M <sup>3</sup>
DEADWEIGHT	1,697.29 LT	1,724.53 MT

## CARGO DECK U.S. METRIC

TONNAGE	1,200 LT.	1,219.26 MT.
STRENGTH	540 lbs/ft. <sup>2</sup>	2.64 MT./M. <sup>2</sup>
LENGTH	120 Ft.	36.58 M
WIDTH	36 Ft	10.97 M
CLEAR AREA	4,320 Ft. <sup>2</sup>	401.34 M <sup>2</sup>

## TONNAGE U.S. INT

GRT	N/A	1,099 GT ITC
NET	N/A	329 NT ITC

## MACHINERY

MAIN ENGINES	2- Caterpillar 3516B
BRAKE HORSEPOWER	4,200
Z DRIVES	N/A
REDUCTION GEARS	2 - Reintjes WAF861
GEAR RATIO	5.842 : 1
RUDDERS	2 - Becker
SHAFT GENERATORS	N/A
AUXILIARY GENERATORS	2-99 kw
EMERGENCY GENERATORS	N/A
BOW THRUSTERS	1-1,000 hp - Azmuthing
STERN THRUSTERS	N/A
LIQUID MUD CIRCULATION	2 - pumps

## PERFORMANCE

MAXIMUM SPEED	12 Kts
CRUISING SPEED	11 Kts
MAXIMUM FUEL CONSUMPTION	172 GPH
CRUISING FUEL CONSUMPTION	138 GPH

## DISCHARGE RATES U.S. METRIC

DRILL WATER	600 GPM@150 Ft.	136 M <sup>3</sup> /Hr @ 45.72 M
FUEL	600 GPM@150 Ft.	136 M <sup>3</sup> /Hr @ 45.72 M
POTABLE WATER	600 GPM@150 Ft.	136 M <sup>3</sup> /Hr @ 45.72 M
METHANOL	N/A	N/A
LIQUID MUD	1,200GPM@150Ft	272.55 M <sup>3</sup> /Hr @ 45.72 M
DRY BULK	1,000 ft /hr@80psi	28.32 M <sup>3</sup> /Hr @ 5.52 bar
BRINE	1,200GPM@150Ft	272.55 M <sup>3</sup> /Hr @ 45.72 M
BASE OIL	1,200GPM@150Ft	272.55 M <sup>3</sup> /Hr @ 45.72 M

## ACCOMODATIONS

CABINS/BERTHS	6 cabins / 16 berths
OFFICERS CABINS	2 cabins / 2 X 1
CREW CABINS	1 cabins / 1 X 4
VIP CABINS	N/A
PASSENGERS CABINS	3 cabins / 1 X 2 & 2 X 4
LOUNGE	N/A
MESS	Seating for 12

## ELECTRONICS & CONTROLS

JOYSTICK	1 Kongsberg Simrad
DEPTH SOUNDER	1 - Datamarine
DGPS	1 - Oceanstar, 1 - Raven
DYNAMIC POSITIONING	1 - Kongsberg Simrad CPOS, DP1
GPS	1 - Garmin
GYRO	1 - Robertson, 1 - Sperry
SSB	1 - SEA
VHF	2 - SEA, 2- Standard Horizon
RADARS	1 - Furuno, 1- Raytheon
RADIO SYSTEM	GMDSS
INTERNET E-MAIL	Globe Wireless
WEATHER RADIO	XM

## SPECIAL EQUIPMENT

CRANE	N/A
SURVIVAL CRAFT	N/A
WINDLASS	1 - Fritz Culver - 1.25 in
RESCUE BOAT	1 - Zodiac
FIREFIGHTING	1 - @1,000 GPM

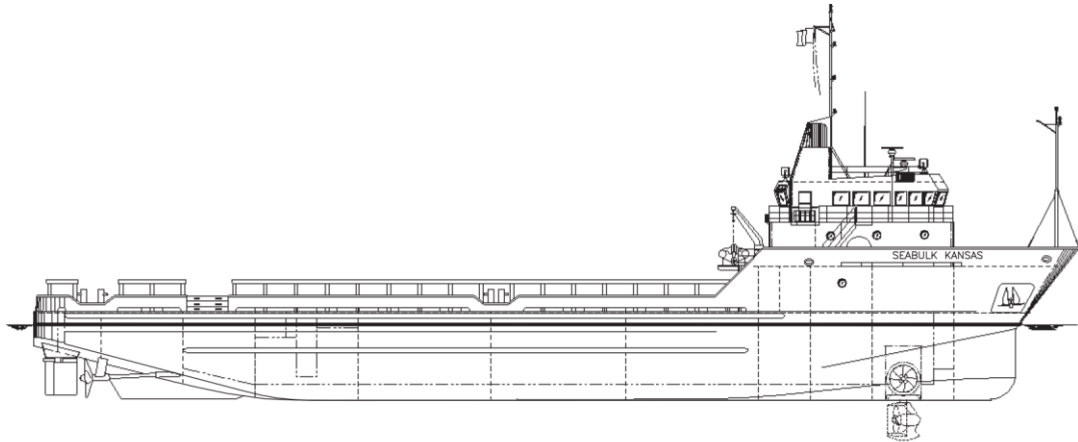
## DOCUMENTATION

CLASS	+A1, U.S. Domestic Service, +AMS, DPS -1
FLAG	PANAMA
SOLAS	YES
YEAR BUILT	1998
OFFICIAL NUMBER	1071486
RADIO CALL SIGN	WCY6961
BUILDER	Halter Marine, Inc

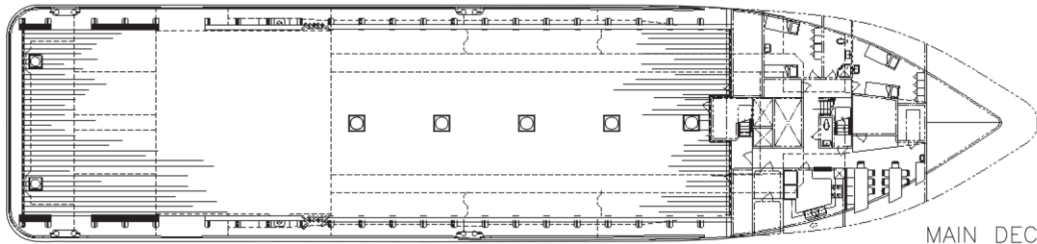
Information provided is for guidance purposes only and are not guaranteed. Please verify accuracy with D JANGO TRADING N.V representative(s)



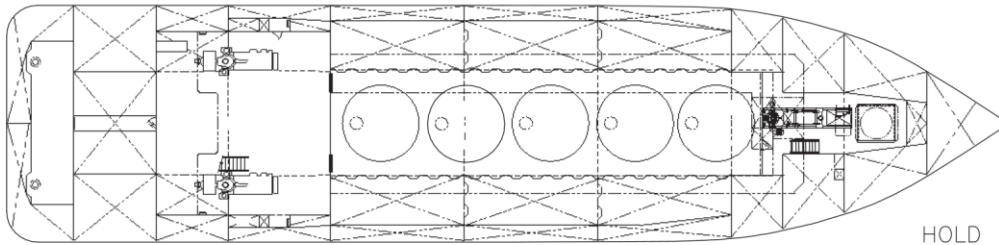
# 205' PSV SEABULK KANSAS



OUTBOARD PROFILE



MAIN DECK



HOLD PLAN

205' PSV SEABULK KANSAS